

# **AGENDA**

## ***WATER/SEWER, STREET/SANITATION COMMITTEES***

***TUESDAY, SEPTEMBER 16, 2025, 8:00 A.M.***

### ***JEFFERSON CITY HALL***

#### **I. STREETS/PUBLIC IMPROVEMENT**

- A. TJ Gardens: Street Closures – Oct 5<sup>th</sup>
- B. Bortz Ravine
- C. Drainage Districts
- D. School Sidewalk

#### **II. SEWER**

- A. WWTP Project
- B. Vac Truck Demo

#### **III. WATER**

#### **IV. SANITATION/RECYCLE**

- A. Waste collection report.
- B. Recycling report.

## Scott Peterson

---

**From:** Steven Bortz <steven@bortzboy.com>  
**Sent:** Tuesday, September 2, 2025 10:21 AM  
**To:** Scott Peterson  
**Subject:** RE: Info for Ravine Project

Hi Scott,

OK let's proceed with this please. I apologize for taking so very long after meeting with you and the committee members in June. My 21 year old son has autism, and it has been a series of mental health crises this summer. At least he now has a part-time job which seems to be working for him.

My main concern with the project is, of course, the ultimate stability of the material placed in the gully, especially when forming the streambed.

The top layer would need to be carefully overlapped and rounded in order to contain the water as it flows down to the river. Material cannot simply be dumped in and then left alone. Otherwise it will all wash out again within a few years.

We would opt to have the dump trucks back down the ravine itself. I would be there off and on to check on the progress and construction.

Please let me know what you are thinking.

Thanks,  
Steve

-----Original Message-----

From: Scott Peterson <ScottP@cityofjeffersoniowa.org>  
Sent: Monday, October 7, 2024 12:50 PM  
To: Steven <bortzboy@gmail.com>; Steven Bortz <steven@bortzboy.com>  
Cc: davemcjeff@netins.net  
Subject: Info for Ravine Project

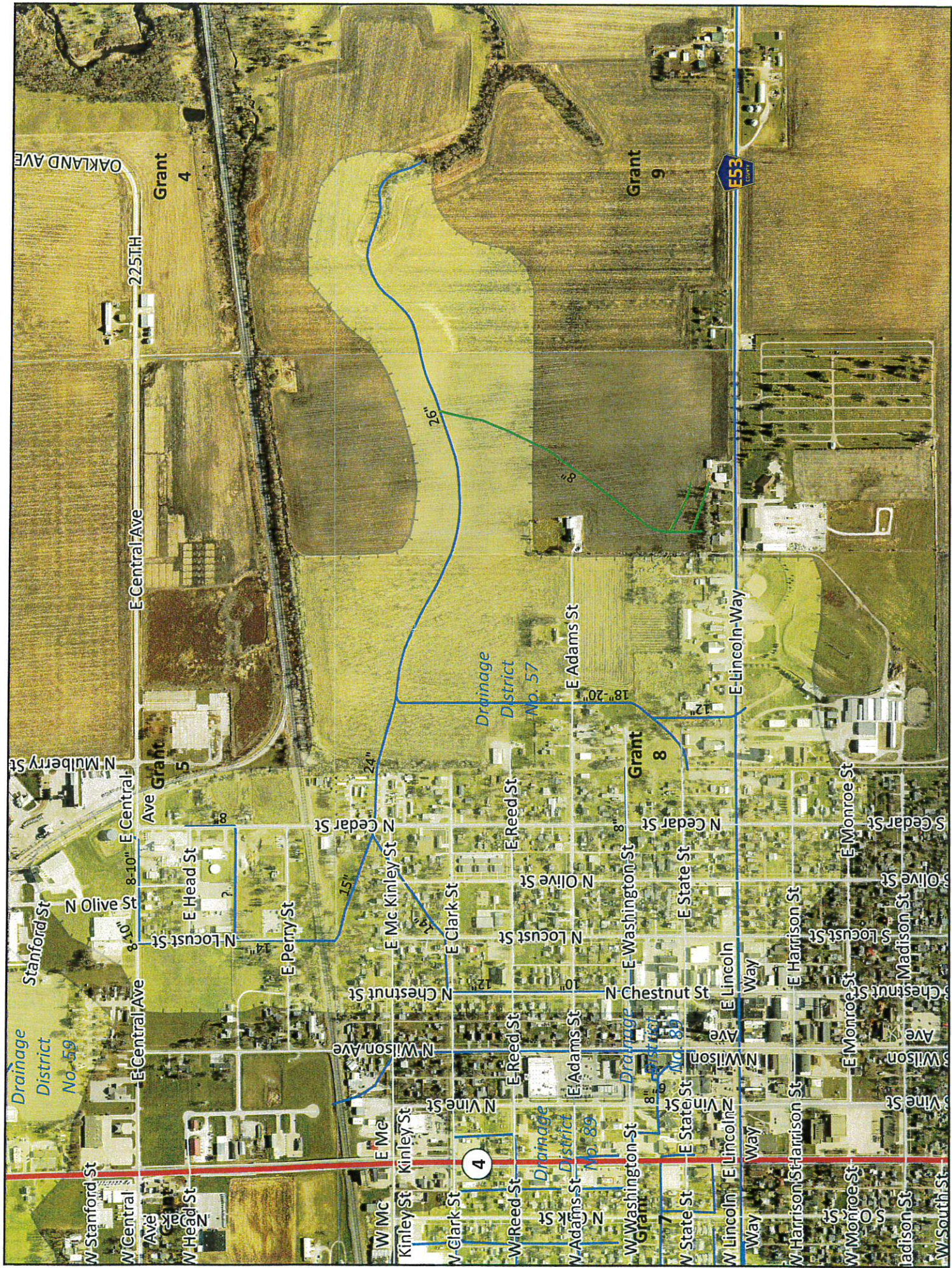
Steve,

Thanks for taking the time to meet with Dave Morlan & I to discuss the ravine south of your family home. Dave & I will call you tomorrow at 10:00 a.m. central time.

Several items:

1. The City proposes to fill the wash-out area with concrete rip-rap where the shoreline has eroded back into the ravine. This looks to be approximately 50' to 100' of washed-out area. The City intends to shape this washed-out area and stabilize it with chunks of concrete. The removal of a few trees may be needed to access this site. The trees will also be placed near the wash-out area in a manner to inhibit erosion.
2. The City will need to drive across your family property with dump trucks and equipment. Two options are shown on the attached aerial photo.













H:\OP\MARCH\_2020\115285\CD\SideWalk-Future.dwg 9/29/2020 11:57 PM

GREENE COUNTY COMMUNITY SCHOOL DISTRICT  
HIGH SCHOOL SIDEWALK EXTENSION - FIGURE 1  
OPINION OF PROBABLE COSTS  
Monday, August 18, 2025

Item No.	Description	Unit	Price	Quantity	Extension
1	TOPSOIL, ON-SITE	CY	\$ 10.00	940.00	\$ 9,400.00
2	EXCAVATION, CLASS 10, CLASS 12, OR CLASS 13	CY	\$ 8.00	2500.00	\$ 20,000.00
3	SUBGRADE PREPARATION	SY	\$ 5.00	3400.00	\$ 17,000.00
4	SUBBASE, CLASS A, 6 INCH	SY	\$ 20.00	2850.00	\$ 57,000.00
5	PIPE CULVERT, TRENCHED, CMP, 12 INCH	LF	\$ 50.00	60.00	\$ 3,000.00
6	PIPE APRON, CMP, 12 INCH	EA	\$ 525.00	4.00	\$ 2,100.00
7	COVER AGGREGATE, 3/8 INCH MINUS, CRUSHED STONE	SY	\$ 10.00	2850.00	\$ 28,500.00
8	ENGINEERING FABRIC	SY	\$ 4.50	3200.00	\$ 14,400.00
9	CONVENTIONAL SEEDING, SEEDING, FERTILIZING, AND MULCHING	AC	\$ 3,000.00	1.20	\$ 3,600.00
10	SWPPP PREPARATION	LS	\$ 3,000.00	1.00	\$ 3,000.00
11	SWPPP MANAGEMENT	LS	\$ 5,000.00	1.00	\$ 5,000.00
12	MOBILIZATION	LS	\$ 10,000.00	1.00	\$ 10,000.00
13					
14					
SUBTOTAL:					\$ 173,000.00
Subtotal Construction:					\$ 173,000.00
Construction Contingencies 10%:					\$ 17,300.00
Opinion of Estimated Construction Cost:					\$ 190,300.00
Subtotal Engineering:					\$ 39,500.00
TOTAL OPINION OF IMPROVEMENT COST					\$ 229,800.00





GREENE COUNTY COMMUNITY SCHOOL DISTRICT  
HIGH SCHOOL SIDEWALK EXTENSION - FIGURE 5 REVISED  
OPINION OF PROBABLE COSTS  
Monday, August 18, 2025

Item No.	Description	Unit	Price	Quantity	Extension
1	TOPSOIL, ON-SITE	CY	\$ 10.00	1100.00	\$ 11,000.00
2	EXCAVATION, CLASS 10, CLASS 12, OR CLASS 13	CY	\$ 8.00	2950.00	\$ 23,600.00
3	SUBGRADE PREPARATION	SY	\$ 4.00	4075.00	\$ 16,300.00
4	SUBBASE, MODIFIED, 3"	SY	\$ 7.00	3315.00	\$ 23,205.00
5	PIPE CULVERT, TRENCHED, CMP, 12 INCH	LF	\$ 50.00	60.00	\$ 3,000.00
6	PIPE APRON, CMP, 12 INCH	EA	\$ 525.00	4.00	\$ 2,100.00
7	SHARED USE PATH, PCC, 6"	SY	\$ 50.00	3315.00	\$ 165,750.00
8	ENGINEERING FABRIC	SY	\$ 4.50	3775.00	\$ 16,987.50
9	CONVENTIONAL SEEDING, SEEDING, FERTILIZING, AND MULCHING	AC	\$ 3,000.00	1.50	\$ 4,500.00
10	SWPPP PREPARATION	LS	\$ 3,000.00	1.00	\$ 3,000.00
11	SWPPP MANAGEMENT	LS	\$ 5,000.00	1.00	\$ 5,000.00
12	MOBILIZATION	LS	\$ 17,000.00	1.00	\$ 17,000.00
13					
14					
SUBTOTAL:					\$ 291,442.50
Subtotal Construction:					\$ 291,442.50
Construction Contingencies 10%:					\$ 29,100.00
Opinion of Estimated Construction Cost:					\$ 320,542.50
Subtotal Engineering:					\$ 63,500.00
TOTAL OPINION OF IMPROVEMENT COST					\$ 384,042.50



# THE CAMEL MAX SERIES COMBINATION SEWER CLEANERS



The **Most Versatile**  
Combo In The Market.

 **Super Products®**



# The Camel Max Models



## CAMEL 900 (Dump Unloading)

- Debris Body: 9 yards
- Vacuum Blower: 3600-5500 cfm
- Water Capacity: 1000 gallons
- Unloading: Dump
- Length: 35' 6" (approximate)
- Height: 11' 6" (approximate)



## CAMEL 1200 (Dump, Eject, or Wastewater Recycle)

- Debris Body: 12 yards
- Vacuum Blower: 3600-5500 cfm
- Water Capacity: 1500 gallons
- Unloading: Dump or Eject
- Length: 38' 6" (approximate)
- Height: 11' 6" (approximate)

## Dump or Eject Unloading



### DUMP UNLOADING:

**Available in the 900 & 1200 models**

The dump unloading system raises the body up to a 50° angle and gravity removes the debris. The unit still maintains a low center of gravity for increased stability.



### EJECT UNLOADING:

**Available in the 1200 model**

**SAFETY PERFORM**

The eject unloading system is the industry's safest and most efficient removal of debris. The body raises to an 10° angle and the ejector plate pushes out debris. It also contains the **only true dewatering system on the market.**



# Camel Max Series Standard Features

## Standard Features

### FRONT-MOUNTED HOSE REEL

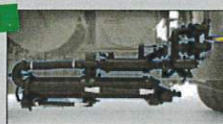
**SAFETY**



- 270° rotation, 180° rotation fully retracted
- Capable of 1000' of 1" diameter sewer hose
- Extends 18"

### ADVANCED WATER PUMP

**ECO**



- Most Fuel Efficient System on the Market
- Pressure Sensing, Double Acting, Single Piston Pump, Powered by Pressure & Flow Compensating Hydraulic System
- Designed Capacity of 100 gpm at 3000 psi

### PRECISION CONTROLS

**PERFORM**



- Ability To Run Water Pump With or Without Vacuum
- LED Panel Lights Enables Readability in All Environments
- Onboard Visual Trouble Shooting. No Computer Needed.

## Additional Standard Features

Category	Features
<b>SAFETY</b>	<ol style="list-style-type: none"> <li>1. Backup Camera</li> <li>2. Body Up Alarm</li> <li>3. Boom Up Alarm</li> <li>4. Debris Body Safety Prop</li> <li>5. Safety Cones</li> <li>6. Sewer Hose Containment Shield</li> <li>7. Tailgate Alarm</li> <li>8. Tailgate Safety Props</li> </ol>
<b>Debris Body</b>	<ol style="list-style-type: none"> <li>1. Centrifugal Cyclone Separator: 44,000 in<sup>3</sup> <b>PERFORM</b></li> <li>2. Exterior Tank Front Mounted Level Gauge</li> <li>3. Industrial Powder Coat Finish</li> <li>4. Internal Debris Tank Flush Out System</li> <li>5. Quick Release Door less than 30" off the ground</li> <li>6. 1/4" Thick Debris Body EXTEN Steel Construction</li> </ol>
<b>Vacuum System</b>	<ol style="list-style-type: none"> <li>1. Hot Shift Transfer Case</li> <li>2. Positive Displacement Blower</li> <li>3. Vacuum Blower: 3600-5500 cfm <b>PERFORM</b></li> </ol>
<b>Water System</b>	<ol style="list-style-type: none"> <li>1. Air Purge</li> <li>2. Antifreeze System</li> <li>3. Dual Nitrogen charge Accumulators</li> <li>4. Dual Hydraulic Cooling</li> <li>5. Water Tank; rotationally molded, non-cross linked, polyethylene, recyclable <b>ECO</b></li> </ol>
<b>Boom System</b>	<ol style="list-style-type: none"> <li>1. 8" Hydraulic Boom with 8' Hydraulic Extension</li> <li>2. 1000 lb Boom Lifting Capacity</li> <li>3. 217° of Rotation</li> <li>4. Tube Storage, Back of Cab</li> </ol>
<b>Tailgate</b>	<ol style="list-style-type: none"> <li>1. Adjustable Hydraulic Wedge Pins (4)</li> <li>2. Hydraulic Powered Tailgate</li> </ol>
<b>Additional Features</b>	<ol style="list-style-type: none"> <li>1. Single Engine Design <b>ECO</b></li> </ol>

## Optional Features

### Options available on all models

Category	Features
<b>ACCULEVEL® Load Sensor System</b> <b>PERFORM</b>	The ACCULEVEL is the only system that allows you to visually measure liquids or solids in the debris body from the control panel.
<b>Hydro Excavation Package</b> <b>PERFORM</b>	Adding the Hydro Ex package will give you the power to clean sewer lines and dig holes with the same machine. This includes water handgun, dig tube, nozzle, tailgate tube rack, and other accessories.
<b>Additional Optional Features</b>	<ol style="list-style-type: none"> <li>1. Fully Automatic Powered LevelWind</li> <li>2. Hose Reel Tensioning</li> <li>3. Hydrant Fill with Auto Shut Off</li> <li>4. Lighting Packages <b>SAFETY</b></li> <li>5. High Dump (1200 models)</li> <li>6. Tool Boxes</li> <li>7. Signboards</li> <li>8. Splash Shield <b>SAFETY</b></li> <li>9. Tailgate Tube Rack</li> <li>10. Trash Pump</li> <li>11. Multiple Chassis Configurations</li> <li>12. Winter Recirculation</li> <li>13. Wireless Remote</li> <li>14. 420,000 btu/hr Water Heater</li> </ol>



# Wastewater Recycling

Super Products' wastewater recycling system enables operators to clean sewers without the use of fresh water.

SAVE  
WATER

Clean 3,000 feet of pipe a day;

**SAVE 60,000 GALLONS**  
of water per week!



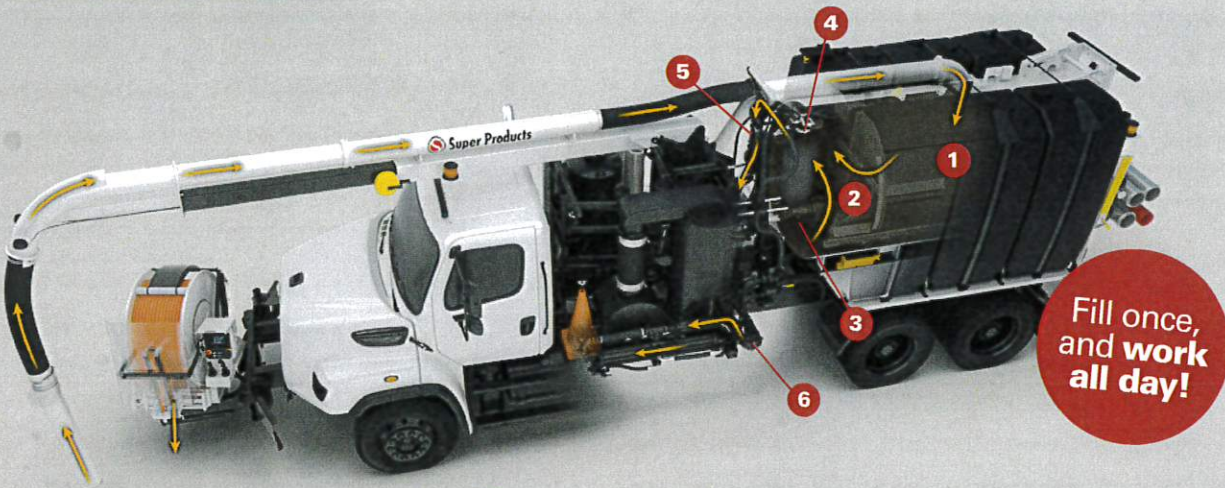
SAVE  
TIME

Longer onsite performance;

**CLEAN 78% MORE**  
pipe per day!



This equates to **2 EXTRA WORK DAYS!**



ECO

## THE BEST SOLUTION For Wastewater Recycling

1. **Debris Tank:** Initial separation takes place as debris enters
2. **Ejector Plate:** Small clearances and passages allow liquids to pass to the bulkhead side, holding solids on the tailgate side
3. **Recycling Water Reservoir:** Controls water level on filter screen
4. **Stainless Steel Wedge Wire Filter:** Self-cleaning and oscillating
  - a. Constant low pressure spray bar uses recycled water to externally clean the screen
  - b. Intermittent high pressure spray bar uses fresh water to internally clean the screen
5. **Cyclone Separator:** Removes particles from the liquid
  - a. Includes an automatic continuous discharge of particles back into the debris body
6. **Y-Strainer with Stainless Steel Element:** Filters the liquid prior to the high pressure water pump

Sourcewell

Awarded Contract

Contract# 101221-SPL

**HGACBuy**  
HELPING GOVERNMENTS ACROSS THE COUNTRY BUY



[www.superproducts.com](http://www.superproducts.com)  
(800) 837-9711

**Super Products®**

A Member of the ALAMO GROUP

\*Disclaimer: Product photos may include standard and/or optional features



## Scott Peterson

---

**From:** davemcjeff@netins.net  
**Sent:** Friday, September 12, 2025 5:30 AM  
**To:** Scott Peterson  
**Subject:** FW: Original Build Sheet

---

**From:** Michael Bills <mikeb@elliotttequipco.com>  
**Sent:** Thursday, September 11, 2025 9:12 PM  
**To:** davemcjeff@netins.net  
**Subject:** Original Build Sheet

15261794            9305    CAMEL 200 10YD DUMP BODY

1

0004283 Camel 200/10.8 cu.yd.(8.2m3)  
0004945 Dump Body unloading  
0004622 6" diameter rear body drain w/10' x 6" Layflat hose  
0004626 10yd Unit, 1000 gallon water capacity  
9410-01938 500 Gallon Auxiliary polyethelene water tank, 10yd Unit  
9410-01846 Dual fill sysyem-curb side front fill witj top street side crossover with strainer  
0004616 Hydraulic tailgate latches and open  
0004617 Dual Float Balls  
9410-01419 Remote Grease Fitting Plumbing (Rear Door Only)  
00049618-XXXXX Rear Splash Shield-Mild Steel  
0004627-00002 8" Vacuum System-Roots Type PD Model 624-18" Hg  
0004632 10-Bolt Hot Shift PTO Drive (Allison 3000/3500 series only)  
0004635 8" Telescoping Boom  
0004636 8" Heavy Duty Boom Elbow  
9410-01869 Boom Pendant  
9410-01868 Wireless Remote (same as 9410-01869) Boom Function plus vent, panic  
throttle, vacuum booster  
9410-01302 Remote Grease fitting Plumbing-Boom Only  
0004638 65GPM at 2000PSI water system 1" dia, Hydrostatic drive  
0004641 Internal Body Flushout System (Dump model only)  
0004643-XXXXX Winter Recirculation  
9410-00812 Air purge system - Truck chassis must have air brakes  
0004645 Retractable Hose Reel with live center with 50' x 1/2" Hose  
0004648 Front Mounted Rotating hose reel for 1" dia sewer hose  
0004652 Hose reel Counter, digital readout (Front mounted reel only)  
3665-8000 800' x 1" diameter-2500psi working pressure 6250 PSI Burst pressure  
9410-01549 Back-up Alarm



0004653 Vacuum level gauge  
 9216-00888 Low water warning light and alarm  
 9410-01464 Operators Control Panel Light  
 0004654 Can Bus Electrical System  
 0004655-XXXXX Flood Light Package, (2) tailgate Area, (2) power unit area  
 9410-01978 Handlight with 25' cord on retractable reel  
 9410-01463-0002 LED Package, All Dot lighting, front & rear strobes and arrowstick  
 9410-01556 Hydraulic assist fold down tube rack (total capacity 6 tubes)  
 0004659 Rear Bumper  
 0004662 Urethane paint finish-unit only, other than white Dupont Gray B8329  
 CT54 Mounting Charge for Customer Supplied chassis  
 9210-01117 2-1/2 lb "ABC" dry chemical fire extinguisher with mounting bracket  
 9210-01118 Highway Warning Triangles (3) with plastic storage box-mounted in cab  
 9450-00201 Front Tow Hooks  
 9410-00458 Rear Tow Hooks  
 0004663 Stainless steel fenders (tandem axle trucks only)  
 CW00 One (1) year warranty, parts only on complete unit  
 CW14 Ten (10) year warranty, parts only on debris body and water tanks  
 0004629 Vacuum Relief Vent Door-Open/close-Control at operator station  
 0004630 Tapered Cyclone Externally Mounted Separator with Clean-out door  
 0004631-XXXXX Hydraulically operated vacuum booster valve  
 0004664 Pleated Final Filter Assembly  
 0004665-XXXXX Hydro Excavation Accessory Kit

\*\*\*\*\*Unit Specials\*\*\*\*\*

Install behind the cab toolbox with two slide out trays and light 18" x 60" x 60"

## Mike Bills

Elliott Equipment Company

Cell: 515.380.0548

Office: 515.986.4840

[mikeb@elliottequipco.com](mailto:mikeb@elliottequipco.com)

Like us on [Facebook](#)

Follow us on [Twitter](#)

View Current Inventory on our [Website](#)







3100 West 76th Street  
Davenport, IA 52806  
Ph: 563-391-4840

Elliott Sanitation Equip. Co.  
1245 Dawes Avenue  
Lincoln, NE 68521  
Ph: 402-474-4840

4000 SE Beisser Drive  
Grimes, IA 50111  
Ph: 515-986-4840  
Fx: 515-986-9530

14219 Norby Road  
Grandview, MO 64030  
Ph: 816-761-4840

4400 E 60th Ave  
Commerce City, CO 80022  
Ph: 303-853-4840

## Quote

Date	Quote #
9/11/2025	23648
Proposed Shipping Date	
Terms	
Net 30	
Rep	
MCB	

City of Jefferson  
220 N Chestnut  
Jefferson, IA 50129

### Here is our quotation on the goods named, subject to the conditions noted:

*CONDITIONS: The prices and terms on this quotation are not subject to verbal changes or other agreements unless approved in writing by the Home Office of the Seller. Prices are based on costs and conditions existing on date of quotation and are subject to change by the Seller before final acceptance. All quotations and agreements are contingent upon strikes, accidents, fires, availability of materials and all other causes beyond our control.*

*Typographical and stenographic errors subject to correction. Purchaser agrees to accept either overage or shortage not in excess of ten percent to be charged for pro-rata. Purchaser assumes liability for patent and copyright infringement when goods are made to Purchaser's specifications. When quotation specifies material to be furnished by the purchaser, ample allowance must be made for reasonable spoilage and material must be of suitable quality to facilitate efficient production. Quoted Prices are good for 60 days.*

*Conditions not specifically stated herein shall be governed by established trade customs. Terms inconsistent with those stated herein which may appear on Purchaser's formal order will not be binding on the Seller.*

*TERMS: Equipment is due on receipt. Carts, Containers, Parts & service are Net 30 unless otherwise noted on your account. Balances over 30 days from the date of invoice are subject to finance charges up to 1.5% per month.*

Qty	Item	Description	Price	Total
1	50093E	2016 Freightliner 114SD, Cummins ISL 370 HP diesel, Allison 3000 RDS automatic transmission, tandem axle, Super Products Camel 200 with 10.8 cu yd tip to dump debris body. Jet and Vac capabilities. Hydroexcavation attachment reel.  Approximately 9,800 miles and 2,200 hours.	275,000.00	275,000.00
			<b>Total</b>	<b>\$275,000.00</b>

TO CONFIRM ORDER, SIGN AND RETURN

X \_\_\_\_\_



# **MINUTES**

## **WATER/SEWER, STREET/SANITATION COMMITTEE WEDNESDAY, AUGUST 19, 2024, 8:00 A.M. JEFFERSON CITY HALL**

**ATTENDEES:** Harry Ahrenholtz, Chad Sloan, Scott Peterson, Jim Leiding, Dave Morlan, Dave Teeples, Kyle Demoss, Danny Moranville, Chad Stevens.

Meeting called to order at 8:00 a.m. by Harry Ahrenholtz

There was no public forum.

### **STREETS/PUBLIC IMPROVEMENT**

CyHawk Tailgate: Jefferson Matters requested street closures for the CyHawk Tailgate event on Thursday, September 4<sup>th</sup>. The Committee recommends approval, and this will be placed on the next Council agenda.

Open House: Journey Financial has requested the closure of the north half of the 100 block of S. Chestnut for their Open House on Tuesday, September 23<sup>rd</sup>. The Committee recommends approval, and this will be placed on the next Council agenda.

Toll Road Fundraiser: The BPO Does submitted a request for a fundraiser on September 6<sup>th</sup> from 6:00 a.m. to Noon at the intersection of Highways 4 & 30. The committee agreed. This will be placed on the agenda for the next Council meeting.

Staffing: Recruitment is open for a Streets position.

### **SEWER**

Sewer Forgiveness: The Committee considered a request for sewer forgiveness from the Early Learning Center. The water leak occurred over three months. Per the policy, they qualified for \$11,067.37 in forgiveness. The Committee considered another request for sewer forgiveness from Suzanne Elisario. Per the policy, she qualified for \$871.98 in forgiveness. The Committee recommends approval, and these two will be placed on the next Council agenda.

High Water Incident: The Committee discussed the recent high water incident and options for mitigation. They discussed the overcharging of the sanitary sewer in the SE part of town and how to identify sources of infiltration. It was noted that flows at the Sewer Plant were ten times the normal flow. The Committee discussed two likely causes of infiltration: sump pumps and footing drains which are plumbed into the sanitary sewer system.

A contractor will be in town next week to clean sanitary sewers and they will also focus on the storm sewer system on the east side of town.



Easements: Alliant Energy is requesting two small easements, one for the new transformer placed at the WWTP, and one for the transformer to be placed in Daubendiek Park for the new restroom. The Committee recommended approval. This will be placed on the Council agenda.

WWTP Open House: The Committee discussed the public open house to be held at the sewer plant on September 12<sup>th</sup>. The Java & Juice will be held at Kelso Park, with a ribbon cutting and small group tours at the WWTP to follow. Golf cart transportation will be provided from Kelso Park to the WWTP.

## **WATER**

Lead Service Line Inventory: Kyle reports that there are three lead, 77 galvanized requiring replacement and 188 unknown lines. There are 1,800 non-lead lines.

Kyle reported that they are performing a Clean-in-Place procedure on Filter #4.

## **SANITATION/RECYCLE**

Waste Report – 238.93 tons to landfill.

Recycling Report – 16.36 tons to Carroll  
10.03 tons to Metro Waste

Meeting adjourned at 9:03 a.m. by Harry Ahrenholtz

Meeting Minutes by Scott Peterson